

Table of Contents

THE WAR OF 1812.....	3
Introduction.....	3
Quick Overview.....	4
<b>THE BASICS.....</b>	<b>6</b>
Movement.....	6
How To Move.....	7
Road Movement.....	7
Bridges.....	8
Fixed Units.....	8
Defensive Fire.....	9
How To Fire.....	9
Offensive Fire.....	12
Meleeing.....	12
How To Melee.....	13
<b>MAIN FEATURES.....</b>	<b>15</b>
Command.....	15
Morale.....	17
Fatigue.....	18
Supply.....	20
Isolated Units.....	21
Combat Results.....	21
<b>ADDITIONAL FEATURES.....</b>	<b>23</b>
The Campaign Game.....	23
Network Play.....	29
Play By E-Mail.....	31
Design Notes.....	33
Tactics.....	40
Leader Names and Faces.....	41
Troubleshooting.....	42
Credits.....	46
Colonial Campaigns Club.....	47
<b>HOT SPOT.....</b>	<b>48</b>
<b>EXIT OBJECTIVE.....</b>	<b>48</b>
<b>FOG OF WAR.....</b>	<b>48</b>
<b>FIXED.....</b>	<b>48</b>
<b>PARAMETER DATA.....</b>	<b>48</b>
<b>HOT KEY.....</b>	<b>48</b>

<b>A/I.....</b>	<b>48</b>
<b>ADVANTAGE.....</b>	<b>49</b>
<b>ISOLATED.....</b>	<b>49</b>
<b>LOW FATIGUE.....</b>	<b>49</b>
<b>MEDIUM FATIGUE.....</b>	<b>49</b>
<b>HIGH FATIGUE.....</b>	<b>49</b>
<b>DETACHED.....</b>	<b>49</b>
<b>ENFILADE.....</b>	<b>49</b>
<b>ZONE-OF-CONTROL.....</b>	<b>49</b>
<b>LOCAL CONTROL.....</b>	<b>49</b>
<b>WEAPON TYPE.....</b>	<b>49</b>

# The War of 1812

## Introduction



**The War of 1812** is a game that covers the war between America and Britain during the years 1812 to 1815. Just about every major battle of the war is covered in this game, plus several hypothetical and "what-if battles are addressed. The game can be played alone versus the computer, or against a human opponent using Play-By-E-Mail and Network Play (over a Local Area Network or the Internet). The game is turn-based with each side moving and firing in their designated phase. A series of battles can be played in turn forming a complete campaign of the war.

The documentation for The War of 1812 is divided up into several parts:

- The [Getting Started Help File](#) covering the basics of play.
- This User Manual covering the general game.
- The [Main Program Help File](#) covering issues specific to the main game engine.
- The [Scenario Editor Help File](#) covering issues specific to the scenario editor.
- The [Campaign Editor Help File](#) covering issues specific to the campaign editor.

All documentation other than the Getting Started Help File exists in two forms. The on-line version, a Windows Help file, is indexed and has links between related topics. The printable version is in the form of a Microsoft Word™ Doc file. This file is best printed using a current version of Microsoft Word rather than Wordpad. The Getting Started Help File can be printed directly from Windows Help.

## Quick Overview



This section provides a quick overview to playing the game and the functions of the main program. For more information, see the various sections on the Phases, Menus, Dialogs, and Other Features found in the help [Contents](#).

### Sides

A War of 1812 Battle is played by two sides, one American and one British. A battle may be played by one person against the computer, or by two persons using a variety of modes such as Two-Player Hot Seat, [Play-By-E-Mail](#) (PBEM), or [Network Play](#). See the Modes Menu in the [Main Program Help File](#) for more information on these modes.

### Hexes

Each battle is played on a map made up of hexagons (hexes). Each hex measures 125 feet across. Each hex contains terrain that affects movement and combat in that hex. See the Hex Info Area in the [Main Program Help File](#) for more information on terrain and its effects.

### Turns

Each battle is conducted in turns each of which typically represents 5 minutes of real time, although this may vary by scenario. Each player has a number of units under their control, some of which are on the map at the beginning of the battle, while others arrive as Reinforcements. See the Units Menu in the [Main Program Help File](#) for more information.

### Units

Typically, each unit is a company of Infantry, a troop of Cavalry, or a piece of

Artillery. Each Infantry and Cavalry unit has a strength value in increments of single men, while each Artillery unit has a strength value in number of guns. In addition there are specialized units such as Leaders and Supply Wagons. Infantry, Cavalry, and Artillery units are capable of firing on enemy units (for Cavalry, only when Dismounted) and each has a range value indicating the number of hexes that unit may fire. See the Hex Info Area in the [Main Program Help File](#) for more information on these values.

### **Turns vs. Phases**

Each battle can be fought in one of two modes. In the default Turn-based mode, each player moves, fires, and melees using units under his control in his turn. There are only a few restrictions on this:

- After firing, a unit cannot move for the remainder of the turn, but may melee in that turn.
- After meleeing, a unit cannot move or fire for the remainder of the turn.

The purpose of these restrictions is to help ensure that the resulting battles are fought in a manner similar to historical battles and with less flexibility that would be found in more modern combat. As each player performs actions in their turn, Defensive Fire is possible by the opposing side under the control of the computer. In the Phase-based mode, invoked using the Manual Defensive Fire Optional Rule, each turn is played as described in the next section.

### **Phases**

Under the Manual Defensive Fire Option, each turn of the battle is divided into Phases. A Phase will be under the control of one side or the other. A complete turn is made up of a total of 8 phases. For example, if the American player is the first player in each turn, the phases will be:

- American Movement Phase
- British Defensive Fire Phase
- American Offensive Fire Phase
- American Melee Phase
- British Movement Phase
- American Defensive Fire Phase
- British Offensive Fire Phase
- British Melee Phase

At the beginning of each Phase (under [Local Control](#)) the Phase Dialog is displayed (see the [Main Program Help File](#) ). In each phase only certain actions are possible. Movement is restricted to the Movement Phase and firing is restricted to the Fire Phases, Defensive and Offensive. The Melee Phase allows hexes containing enemy units to be assaulted and possibly captured. See [Movement](#) , [Defensive Fire](#), [Offensive Fire](#), and [Meleeing](#) for more information.

## Selecting Units

Most actions require that units first be selected. Clicking on a hex on the map with the left mouse button causes that hex to become the current **Hot Spot**. The units in the current Hot Spot are displayed in the Hex Info area (see the [Main Program Help File](#)). These units may be selected by clicking on their pictures in the Hex Info Area with the left mouse button. Alternatively, all units in a hex may be selected by double clicking on the hex with the left mouse button. Once selected, units may be moved in the Movement Phase by right clicking on the adjacent hex to move to. Selected units may fire in a Fire Phase by right clicking on the target hex.

## End Of Game

As each player finishes their phase, they advance the battle to the next phase by using the **Next Phase** function of the Phase Menu (see the [Main Program Help File](#)). This continues until the time limit specified in the scenario at which point the win, lose, or draw outcome of the battle is determined. Winning and losing are determined by a calculation based on the ownership of certain **Objective** hexes and the relative losses of the two sides. See the **Victory** selection of the Info Menu (in the [Main Program Help File](#)) for more information on victory conditions.

# The Basics

## Movement



Movement involves moving units under your control during your Turn or during the Movement Phase. It is also used to perform certain functions such as changing facing and formation (see the Command Menu in the [Main Program Help File](#)). No combat occurs during the Movement Phase. Each unit is allocated a certain movement allowance at the beginning of the player's turn. Each unit may use some, all, or none of its movement allowance during that turn. Unused movement allowance points are not accumulated. Note that depending on the scenario, certain units may be **Fixed** which prevents them from being moved.

## How To Move

Units must be selected before they are moved. Once selected, units may be moved to an adjacent hex by clicking on that hex with the right mouse button. Alternatively, it is possible to move the selected units to a nonadjacent hex by clicking the starting hex with the left mouse button, dragging the mouse to the ending hex while holding the mouse button down, and then releasing the mouse button. This will cause the computer to calculate a minimum-distance path from the starting hex to the ending hex and automatically move the selected units according to that path. Note that not all moves are possible depending on the terrain and movement allowance of the selected units.

Movement costs vary depending on the terrain being moved into and any hexsides being crossed. In general it is not possible to cross a **Creek** hexside except at a Ford or Bridge.

### Formation

Infantry units may move while either in Line or Column formation although movement is more efficient in Column. The formation of Infantry units may be changed using the **Change Formation** function of the Command Menu. Note that Infantry can only change to Line formation before moving in that phase (see [Design Notes](#) for an explanation). Artillery units must be limbered in order to move. Changing to this state is performed using the **Change Formation**. Cavalry may move in either a mounted or dismounted state, although movement is more efficient when mounted. Again the **Change Formation** function is used to change this state.

In addition, certain units may enter **Extended** formation. This represents the open order formation used by skirmishers as opposed to the shoulder-to-shoulder formation used by units in line. Units designated as Light as well as all Militia units may use Extended formation. Indian units are restricted to Extended formation whenever they are not in Column.

### Line Disruption

By default, Infantry units in line formation that enter Village or Marsh terrain automatically become Disrupted.

## Road Movement

Depending on the scenario, there will be roads and trails on the battlefield. These facilitate movement under certain circumstances. In order to take advantage of Road Movement, the unit moving must be in either Column formation (for Infantry), Mounted formation (for Cavalry), or Limbered (for Artillery). In addition, no more than one non-Leader unit may move through the hex containing the road or trail at one time.

## Bridges

Normally movement into Water hexes is prohibited. However, depending on the scenario, Bridges may be present that allow Water hexes to be crossed. However, in order to move onto a Bridge, the unit must be in Column formation (Mounted for Cavalry, or Limbered for Artillery) and no more than one non-Leader unit may attempt to enter or leave the Bridge hex at one time.

### Column Movement

It is possible to move several units at a single time using Column Movement. The units to be moved should all belong to the same organization and should be lined up in one hex after another, or in the same hex as they would be when first placed as reinforcements. You should double click on the head of the column to select all units in that hex. Then either

- Drag and release while holding down the left mouse button and the **Alt** key, or
- Right click in an adjacent hex, while holding down the **Alt** key.

This will move the first unit in the column towards the destination hex while moving each unit in turn along the same path.

Note that Column Movement is applied to units based on their organization and that the organization is determined by the top unit of those selected. For example, if the a unit from a particular Regiment is selected at the head of the column, then Column Movement will move all other units of the Regiment in the same hex or in hexes leading from that hex. Likewise, if a higher level leader is the top unit selected, the Column Movement will move all units from the leader's organization starting from the first hex. In this way it is possible to easily bring larger organizations on the map as reinforcements and march them into battle with a small effort.

### Night Turns

Special rules apply during **Night** turns. Units that attempt to move in line formation during Night turns automatically become Disrupted. Also, Artillery that unlimbers during Night turns becomes Disrupted.

## Fixed Units

Certain units may start a scenario as Fixed. Fixed units may fire and may change formation, may not move until they are Released. This can occur in one of several ways:

- Units that are fired upon, or meleed against, are automatically Released.



- Depending on the scenario, there may be Releases of Fixed units built into the scenario that will release the units at specified times.
- If a Fixed unit is spotted by an enemy unit that is 5 hexes away or closer, then it automatically becomes Released.

## Defensive Fire



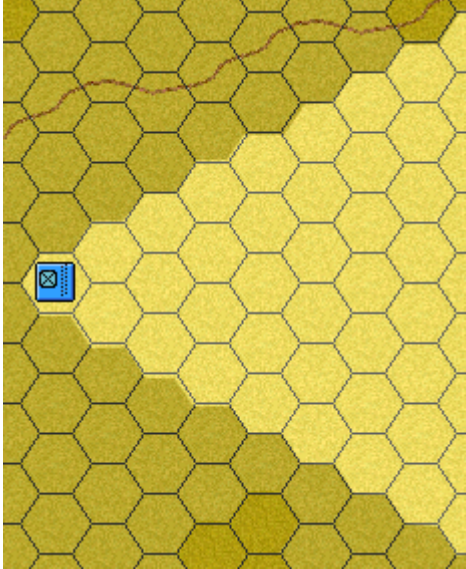
Defensive Fire occurs either during the Defensive Fire Phase or when using Turns, under the control of the computer. This fire gives the player a chance to fire on the enemy before being fired upon and being engaged in melee. It therefore represents the ability of the defender to have first fire. No movement is possible during a Fire phase. Defensive Fire is subject to the normal restrictions of firing including facing. However, it is possible for units with Low Ammo to fire Defensive Fire (see the [Design Notes](#) for why this true in the Defensive Fire Phase and not the Offensive Fire Phase).

### How To Fire

To fire on the enemy, first Select the firing units. As a convenience, you may include Leaders in this selection although they have no effect on fire. Then you right-click on the target hex while holding down the **Ctrl** (Control) key. Alternatively, you may switch to **Fire Mode** by using a toolbar button, in which case you simply right-click on the target hex. If there is more than one possible target in the target hex, you will be prompted with the Target Dialog to select your target.

Fire effectiveness depends on the [Weapon Type](#) of the firing unit, the range from the firing unit to the target hex, the [Fatigue](#) of the firing unit, and under Optional Rules, the Quality of the firing unit. Leaders have no effect on fire effectiveness.

### Facing Restrictions



A unit must be facing the target unit before it can fire. A unit faces one of 6 hex vertices represented by the facings "Up-Right", "Right", "Down-Right", "Down-Left", "Left", and "Up-Left". For each facing there are two frontal hexsides that are adjacent to the hex vertex. The target unit must be within the area determined by these two hexsides. For example, for a unit facing Right, the unshaded region in this picture indicates those hexes the unit is facing.

### Range and Line of Sight Limitations

A target unit must be within range before it can be fired upon. If you right click on a unit's picture in the Unit List display, it will show you the range of that unit. In addition, the target unit must be within the Line of Sight of the firing unit. The **Visible Hexes** option of the Display menu can be used to determine the hexes that are visible from the current Hot Spot.

### Fire Modifiers

The following modifiers are applied to ranged fire.

- Units that have not moved during their turn get a defensive benefit from fence and stone hexsides. All units get a defensive benefit when behind an embankment hexside or behind breastworks. The actual benefit is determined by Parameter Data and can be found by using the **Parameter Data** option of the [Help menu](#) .
- Units may get a defensive benefit from the terrain of the hex they are in. The benefit is shown in the Terrain Info box of the Unit List.
- The target unit receives a defensive benefit when it is at a higher elevation than the firing unit. This benefit is normal for a single elevation change and is doubled for any elevation change of 2 increments or more. The actual value of this benefit can be found in the [Parameter Data](#) .

- A Cavalry unit that is mounted or in the act of dismounting is subject to a fire modifier when fired upon. The value of this modifier is in the **Parameter Data**.
- An unit in column formation or one that is fired upon by a firing unit that it is not facing, is subject to an Enfilade fire modifier. The value of this modifier is in the **Parameter Data**.
- A firing unit that has **Medium Fatigue**, has 10% subtracted from its fire value. A unit that has **High Fatigue** has 20% subtracted from its fire value. A unit with Maximum Fatigue has 40% subtracted from its fire value. Fatigue modifiers are doubled for artillery.
- If the firing unit is Infantry or Cavalry and the Quality Fire Modifier optional rule is in effect, then 10% is added to its fire value if it has a Quality of A or B, and 10% is subtracted from its fire value if it has a Quality of E or F.
- Disrupted units fire at half effectiveness.
- Losses against units in Extended formation are halved.
- Fire values against Supply Wagons are doubled.
- Artillery fire values are based on the number of guns times 50 in addition to the normal fire value modifiers.

### **Cavalry Effects**

Dismounted Cavalry fires at  $\frac{3}{4}$  effectiveness to account for the horse holders. In addition, in the first Defensive Fire Phase after changing formation from mounted to dismounted, Cavalry is considered dismounting and is subject to the normal mounted Cavalry fire modifiers.

### **Fire Casualties**

Fire casualties are calculated using the standard **Combat Results** based on the effective fire value of the firing unit with a Low Combat Value of 2 and a High Combat Value of 15.

Example: Suppose an Infantry Unit of 34 men equipped with Muskets fires at an enemy infantry unit 1 hex away. The standard range effectiveness of a Musket at range 1 is 6. Thus the standard fire value for the unit would be 204 (=34 x 6). The low end combat result would be 0.408 (= 2 \* 204 / 1000) and the high end combat result would be 3.06 (= 15 \* 204 / 1000). The actual combat result would be randomly determined between these two extremes. Randomly based on the fractional part of the actual combat result, the combat result is truncated up or down. This if the actual combat result was calculated to be 2.40, then this would determine a combat loss of 2 men 60% of the time and a loss of 3 men 40% of the time.

## Offensive Fire



Offensive Fire occurs during a player's turn or during the Offensive Fire Phase. This allows units that may have advanced during the Turn or Movement Phase to fire after movement. All fire modifiers and restrictions described in the section on [Defensive Fire](#) apply to Offensive Fire as well.

### Offensive Fire Modifiers and Effects

- Units that fire Offensive Fire after movement in the same turn do so at half effectiveness.
- Artillery batteries that have moved in the same turn cannot fire Offensive Fire (see the [Design Notes](#) for why this also applies to changes in facing).
- Units that are Low On Ammo cannot fire Offensive Fire.
- In the first Offensive Fire Phase after changing formation from mounted to dismounted, Cavalry is considered dismounting and cannot fire.

Units that do not fire Offensive Fire, receive a 10% bonus to the melee strength if they attack in the same turn (see the [Design Notes](#) for an explanation).

## Meleeing



Meleeing allows the controlling player to initiate attacks against enemy units in adjacent hexes and possibly occupy the defending hex. In order for a unit to be committed to a melee attack, they must be un-Disrupted and be facing the defending hex (see the [Design Notes](#) for why Disrupted units cannot melee attack).

## How To Melee

A Melee consists of a couple of decisions. You must first decide which enemy location you wish to Melee attack. You can specify that location by right-clicking in the enemy hex. You then must decide which of your own forces you wish to commit to the melee. They must be in adjacent hexes and facing the enemy hex. You Select the units you wish to commit, and then use the **Add to Melee** command of the Melee Menu to add them to the attack. Once you have added all of your attacking units, you resolve the Melee using the **Resolve Melee** command of the Melee Menu, or the corresponding toolbar button.

A second, perhaps easier method for initiating and resolving Melees is via the drag and drop method. Here you simply select the attacking units and, while holding down the left mouse button, move the mouse to the target hex and let go. You can do this for as many attacking units as you wish to add. Then you resolve the Melee normally using the menu command or toolbar button.

Certain restrictions apply to units that are committed to a Melee attack. Fixed, Disrupted, and Routed units cannot Melee attack (see the [Design Notes](#) for why this applies to Disrupted units). Units must be Facing the hex they are attacking. Infantry units and dismounted Cavalry cannot Melee attack non-[Isolated](#) mounted Cavalry. Artillery, and Supply Wagons cannot Melee attack. A unit cannot Melee attack a hex they could not legally move into (it is not possible to Melee attack across a Creek hexside for example). Units may only Melee attack once in each player turn. Cavalry that has dismounted in the preceding Movement Phase cannot melee attack. The total number and strength of the attacking units may not exceed the stacking limitations of the defending hex.

### Melee Modifiers

Melees are calculated using total number of men of the attacking side and the total number of men of the defending. Dismounted Cavalry may Melee, but does so at  $\frac{3}{4}$  effectiveness to account for the horse holders. Modifiers may be applied to the calculation of the defending men.

- Each defending Artillery gun counts as 8 men.
- Routed and Isolated units have their defending strength divided by 4. However, units that are Routed and Isolated defend with a strength of 0.
- Units that have already defended in melee and have retreated into a hex that is then attacked in melee have their defending strength divided by 2.
- Supply Wagons defend against melee with a strength of 0.

Modifiers are applied to the melee strengths.

- If no attacking units have fired in the Turn or preceding Offensive Fire Phase, then 10% is added to the attacking strength.

- If the attacking units have a Leader with them, then 10% is added to the attacking strength.
- If the defending units have a Leader with them, then 10% is added to the defending strength.
- If the defending units are attacked (by a non-Leader) from a hexside they are not facing, then 20% is added to the attacking strength.
- The largest hexside modifier of all of the hexsides the attackers are attacking through is applied to the attacking strength.
- Melee attacks against higher elevations have a modifier equal to the elevation change (in elevation increments) times the Elevation Modifier (see the [Parameter Data Dialog](#) for this value). Normally elevation increments are equal to 10 foot elevation changes, but this depends on the map.
- If all the attacking units are mounted Cavalry in Clear hexes attacking a Clear hex, then 10% is added to the attacking strength.
- [Fatigue](#) modifiers apply as described in the section on Fatigue.
- Optionally, Quality modifiers may apply as described in the Optional Rules Dialog of the [Main Program Help File](#) .
- Units in Extended formation and units without bayonets melee at 1/4 effectiveness.

### **Special Melee Effects**

When units in Extended formation and units without bayonets are attacked by normal units (those not in Extended formation or having bayonets) and the defending units lose the melee, then the defending losses are halved. This reflects the fact that such units would not stand and fight against an attack such as this and would fall back without contesting the attack.

If both the attacking and defending units consist entirely of cavalry and leaders, then the resulting melee casualties are reduced to ¼ of normal (see the [Design Notes](#) for why this is so).

### **Melee Resolution**

The final resolution of the melee is done using the standard [Combat Results](#). The adjusted defending strength is used to calculate attacker casualties using a Low Combat Value of 25 and a High Combat Value of 100. The adjusted attacking strength is used to calculate defender casualties using a Low Combat Value of 10 and a High Combat Value of 50. The loser is the side with the greater casualties (defenders win ties). Melee fatigue losses are 50% more than normal and, in the case of the melee loser, fatigue losses are double. The melee defender is subject to normal Morale Checks based on their losses and must automatically take a Morale Check at the end of the Phase if they lose the melee.

Example: Suppose an infantry unit of 45 men melee attacks an enemy infantry unit of 23 men. Two combat results are determined. The attackers would determine a low end casualty value of 0.45 ( $= 10 * 45 / 1000$ ) and a high end casualty value of 2.25 ( $= 50 * 45 / 1000$ ). The casualty loss of the defenders would be randomly determined between these two extremes. Likewise, the defenders would determine a low end casualty value of 0.575 ( $= 25 * 23 / 1000$ ) and a high end casualty value of 2.3 ( $= 100 * 23 / 1000$ ). The casualty loss of the attackers would be randomly determined between these two extremes.

## Main Features

### Command



**Command** refers to the influence leaders have over the state of the forces under their command. Good use of Command will result in units being better able to move and fight, while Command failures will result in reduced capabilities.

Each Leader is assigned a default **Command Rating** ranging from **A** (best) to **F** (worst). This rating can be affected in a positive way by the Leader's commander (if he has one) provided the Leader is not **Detached**. At the beginning of each player's Movement Phase, a **Command Test** is performed

for all leaders currently on the map. The Command Test begins with the highest commanding leaders on the map and proceeds downward through the command hierarchy. Each Leader's Command rating is translated into a number by converting A to 6, B to 5, and so on down to F to 1. This number is compared to a random die roll from 1 to 6. If the Leader's number is greater than or equal to the die roll, the Leader has passed the Command Test for that turn. A Leader that has failed his Command Test will have his Command rating displayed in Yellow in the Hex Info Area (see the [Main Program Help File](#)). A Leader that passes his Command Test will pass a +1 **Command Bonus** modifier down to the Command ratings of his subordinate commanders (except to [Detached](#) Regiment Leaders). If a Leader receives a Command Bonus from his superior and passes his Command Test, his Command rating will be recorded as the higher number for that turn. For example, a Brigade leader with a nominal Command rating of C that receives a +1 Command Bonus from his superior and passes his Command Test, will have a Command rating for that turn of B. In addition, a Leader that passes his Command Test will pass a Command Bonus down to his subordinates that is one more than the Command Bonus he received. A Leader that fails his Command Test passes no Command Bonus to his subordinates regardless of any Command Bonus he had received.

Here is an example. Suppose the command hierarchy at a battle consisted of

- Army commander: Maj. Gen. I Brock. Command Rating of C.
- Regiment commander: Maj. Gen. R. Sheaffe. Command Rating of D.

The Command Test begins with Brock whose number for the Command Test is 4. Suppose that the die roll is 3 and thus Brock passes his Command Test this turn. Brock passes a Command Bonus of 1 to Sheaffe which gives Sheaffe a number of 4 (= 3 + 1) for his Command Test. Suppose that the die roll is 4 and thus Sheaffe passes his Command Test giving him a Command Rating of B for this turn.

After all Leaders have been through the Command Test, they are used to determine if Disrupted units become un-Disrupted that turn. A [Detached](#) unit is given a value of 1 for the **Test for Undisruption**. A non-Detached unit whose Leader has passed his Command Test is given a value of 1 plus the current numerical Command Rating of his commander. If a random die roll is less than or equal to this value, then the unit becomes un-Disrupted.

During Night turns, all Leaders and units have a Command value one less than normal. Thus, a Leader with a Command Rating of A would have a numerical rating of 5 during Night turns and a Detached unit would have a value of 0 in the Test for Undisruption (and thus be unable to become un-Disrupted).



# Morale



**Morale** refers to the mental state of the fighting units and the effect leaders have on restoring that state in the forces under their command. Units with good Morale and with inspiring leaders will fight better than units with low Morale or uninspiring leaders. Often a smaller force can overwhelm a larger one if it has superior Morale.

Each unit is assigned a Quality value ranging from **A** (best) to **F** (worst). This Quality value is the basis for determining the unit's current Morale. Each Leader is assigned a Leadership value ranging from **A** (best) to **F** (worst). This Leadership value determines the extent the leader will be able to affect the Morale of the units under his command.

When a unit suffers casualties due to combat, it will take a Morale Check to see if it Routs or becomes Disrupted at the end of the Phase. In addition, units with Fatigue level 90 that take a Fatigue loss also are required to take a Morale Check. The Quality value of the unit is used as the base value for Morale by converting A to 6, B to 5, and so on to F to 1. Modifiers are applied to this base Morale to obtain the final Morale value for the Morale Check.

- If the unit is stacked with a Leader, then 1 is added to the Morale.
- If the unit is Low On Ammo or Out Of Ammo, then 1 is subtracted from the Morale.
- If it is a Night turn, then 2 is subtracted from the Morale.
- If the unit has **Medium Fatigue**, then 1 is subtracted from the Morale.
- If the unit has **High Fatigue**, then 2 is subtracted from the Morale.
- If the unit has been fired upon **Enfilade**, then 2 is subtracted from the Morale.

- If the unit is Disrupted, then 1 is subtracted from the Morale.

The resulting Morale value is compared with a random Die Roll from 1 to 6, and if the Die Roll exceeds the Morale value, then the unit fails the Morale Check. A unit that fails the Morale Check during a Defensive Fire Phase becomes Disrupted, while a unit that fails the Morale Check during any other Phase becomes Routed. If a Routed unit fails the Morale Check, it stays Routed, but also loses a number of men based on the amount the Die Roll exceeds the Morale, times 25 for Infantry and Cavalry, which is reported as **lost stragglers**. Unless the unit has **High Fatigue**, unlimbered Artillery is not subject to routing.

When a unit routs, all units in the same hex as the unit and all units in adjacent hexes to the unit must also take a Morale Check. If any units in adjacent hexes fail the Morale Check, then this process is carried over into hexes adjacent to those hexes.

At the beginning of a player's Movement Phase, Rally Checks are performed on Routed units to see if they Rally. Routed units that Rally become Disrupted and are eligible to become un-Disrupted starting with the next turn. Again the Quality of the unit is the base value for Morale for the Rally Check. These Modifiers are applied to this value to result in the final Morale value.

- If the unit is stacked with a Leader of the same organization or a higher organization as the unit and if the Leadership rating of the Leader is higher than the Morale value, the Morale value is set equal to that rating. If the Leadership rating is already equal to the Morale value, then 1 is added to the Morale value.
- If it is a Night turn, then the Morale value of the unit is divided by 2 with fractions rounded up (for example 5 becomes 3).
- If it is a Day turn, then the Morale value may be affected by Division and Army Leaders in adjacent hexes using the same process for Leaders in the same hex.

A random Die Roll from 1 to 6 is compared with the resulting Morale value, and if the Die Roll is less than the Morale value, the unit becomes un-Routed.

## Fatigue



**Fatigue** refers to the detrimental effects combat has on the physical condition of the fighting units.

Fatigue values range from 0 (none) to 90 (highest). Within this range, they are further divided into **Low Fatigue** (0 to 29), **Medium Fatigue** (30 to 59), and **High Fatigue** (60 or higher). Leaders do not suffer from Fatigue. Fatigue values represent the *Combat Fatigue* of the unit and are not intended to represent the simple physical fatigue of being *winded* (see the **Design Notes** for more discussion on this distinction).

When units are fired upon, they may suffer a Fatigue loss as a result. Furthermore, units participating in Melee also suffer Fatigue losses as a result of combat. Units with a Fatigue level of 90 cannot have their Fatigue value increased further, but whenever a Fatigue loss is suffered by such a unit, they must take a **Morale** Check at the end of the Phase.

If a unit has Medium Fatigue, then

- 1 is subtracted from its **Morale** value during Morale Checks.
- 10% is subtracted from the melee strength when the unit participates in a Melee attack.
- 10% is subtracted from the fire value when the unit fires. If the unit is Artillery, then 20% is subtracted.

If a unit has High Fatigue, then

- 2 is subtracted from its Morale value during Morale Checks.
- 20% is subtracted from the melee strength when the unit participates in a Melee attack (this overrides the affect of units with Medium Fatigue).

- 20% is subtracted from the fire value when the unit fires. If the unit is Artillery, then 40% is subtracted.

If a unit has Fatigue level 90, then

- 40% is subtracted from the melee strength when the units participates in a melee attack.
- 40% is subtracted from the fire value when the unit fires. If the unit is Artillery, then 80% is subtracted.

A unit may be eligible to recover Fatigue at the beginning of a player's Movement Phase provided it has not Moved, Fire, participated in Melee, or been Fired upon with any effect from the time of the player's previous Movement Phase. For each such unit a random value from 0 to twice the applicable recovery rate, determined by [Parameter Data](#) associated with the current battle, is subtracted from the unit's Fatigue value. See the Parameter Data Dialog in the [Main Program Help File](#) for the recovery rate values.

## Supply



**Supply** refers to the ammunition that units have available to fire during the battle. A unit may become Low On Ammo or Out Of Ammo during the battle reducing or eliminating their ability to fire their weapons. Supply Wagons are used to maintain supply levels for the forces on the map. Each unit of strength of a Supply Wagon represents enough ammunition to resupply 10 men.

Each time an Infantry unit fires, there is a certain probability that this will result in a reduction in the unit's ammunition level (see the [Design Notes](#) for a discussion of why this can result in reduced ammunition levels in the first turn). The ability for Artillery units to fire is based on the Ammo Level for their side.

If the Isolation Effects Optional Rule (see the [Main Program Help File](#) ) is being used, then Artillery units can also become Low or Out Of Ammo when [Isolated](#).

The probability chance that a unit will suffer a loss of ammo while firing is determined by [Parameter Data](#).

A unit that is Out Of Ammo cannot fire again until it is resupplied. A unit that is Low On Ammo can only fire during the Defensive Fire Phase (see the [Design Notes](#) for why this is the case). Being Low or Out Of Ammo affects the [Morale](#) of the unit.

Units can become resupplied at the beginning of the player's Movement Phase provided they are not Routed and they can trace a path no longer than 5 hexes long that does not go through enemy units or empty hexes in their [Zone-Of-Control](#) to a friendly Supply Wagon. This resupply will reduce the Strength of the Supply Wagon by 1 unit for every 10 men in the Unit. Supply Wagons that are reduced to a Strength of 0 are automatically removed from the map.

## Isolated Units

When the Isolation Effects Optional Rule is in effect, then at the beginning of each turn, a test is performed on each unit for the current player to determine if the unit should be flagged as being Isolated. The test attempts to trace a line of hexes from the unit to one of the following hexes:

- Any hex on the edge of the map.
- Any Blocked hex.
- Any hex containing a Supply Source.

This line of hexes must not pass through an enemy Zone-Of-Control that is not occupied by a friendly unit. If no such line can be traced, then the unit is marked as being Isolated. Isolated units defend in Melee at  $\frac{1}{4}$  strength. This represents the tendency of surrounded units to surrender.

## Combat Results



A common combat results calculation is used for both fire and melee results. The combat results calculation is based on four parameters: a combat value, a modifier, a **Low Combat Value (LCV)** and a **High Combat Value (HCV)**. For fire combat, the combat value is the adjusted fire value of the firing units. For melee combat, the combat value is the adjusted strength of the opposing side. The given modifiers are applied to the given combat value to arrive at the effective combat value. The Low Combat Value and High Combat Value are the extreme possible casualties resulting from a base-line combat value of 1000. The effective combat value is used to scale these accordingly resulting in low and high possible casualties. Finally a random value is selected between the low and high casualty values to arrive at the final combat result.

For example, given a combat value of 400, a modifier of 25%, a Low Combat Value of 5 and a High Combat Value of 25, the effective combat value would be 500 ( $= 400 + 25\%$ ). This would be  $\frac{1}{2}$  of the base-line combat value of 1000. Thus the low casualty value would be 2.5 ( $= 5 / 2$ ) and the high casualty value would be 12.5 ( $= 25 / 2$ ). The resulting casualty value would be randomly generated between 2.5 and 12.5 for this combat. Finally, based on the fractional part of the casualty value, it is randomly rounded up or down. For example, if the casualty value was calculated to be 3.7, then 30% of the time this is rounded down to 3 and 70% of the time is rounded up to 4.

Artillery losses resulting from enemy artillery and infantry fire is calculated on the basis of 1 gun = 25 men. Combat losses less than 25 men result in a probability of a 1 gun loss proportional to the value. Thus a combat loss of 5 men applied to an artillery unit would result in a probability of  $5/25 = 20\%$  that a one gun loss would occur.

Fatigue results are calculated as random values between the casualty value and 3 times the casualty value.

When Morale Checks are applicable, they are determined based on a probability using the given loss as:

$$\text{loss} / (\text{loss} + 6)$$

Thus a unit that takes a loss of 6 men has a 50% chance of requiring a morale check and a unit that takes a loss of 24 men has an 80% chance of requiring a morale check.

When the optional rule **Alternative Calculation** of combat results is chosen for fire or melee results (see the [Main Program Help File](#) ), then the resulting casualty value is based on the average of two default casualty calculations. This produces values that are more likely to be in the midrange of the casualty interval rather than uniformly distributed.

## Additional Features

### The Campaign Game



The **Campaign Game** links together individual battles and their outcomes to form a complete campaign. To begin or continue a campaign game, run the **Campaign Front End** from the War of 1812 program group.

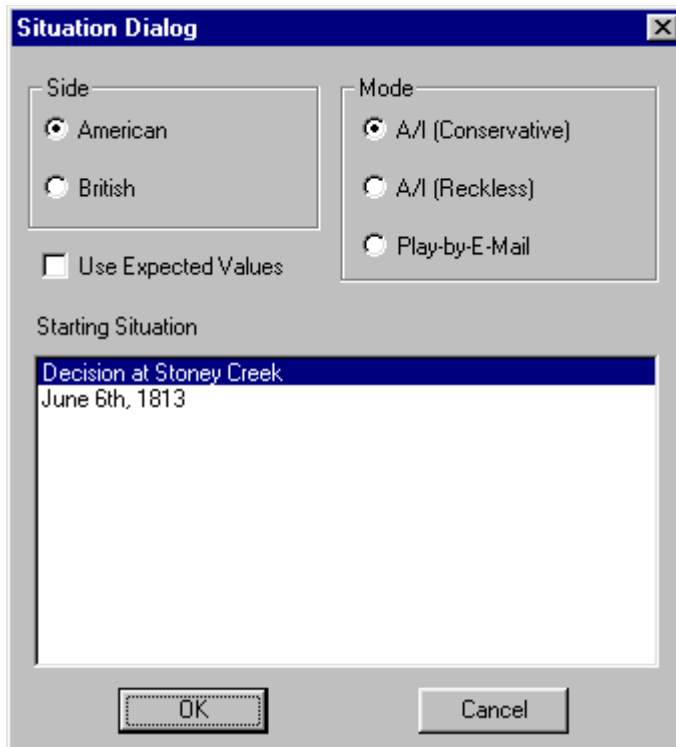
A campaign consists of a series of **Situations**. Each Situation presents both sides in the campaign with a list of possible **Choices**. Based on the selections made among these choices, a particular **Battle** will be fought by the two sides. Depending on the **Outcome** of the battle, the campaign will branch to another Situation in the campaign, or possibly to the campaign **Conclusion**.



The Campaign Front End begins by asking you if you want to start a new campaign or continue an existing one. Of course, the first time you run the Front End, you'll select that you want to start a new campaign. In general, there are multiple campaigns to choose from. There are a certain number of campaigns that are distributed with the game. In addition, you can create new campaigns by using the **Campaign Editor**.

When you start a new campaign, you will be asked to specify a filename for the campaign. Note that campaigns are stored in files with the extension `cpf`. You should use a name that is descriptive of the campaign so that you can have several campaigns going at one time and keep track of them.



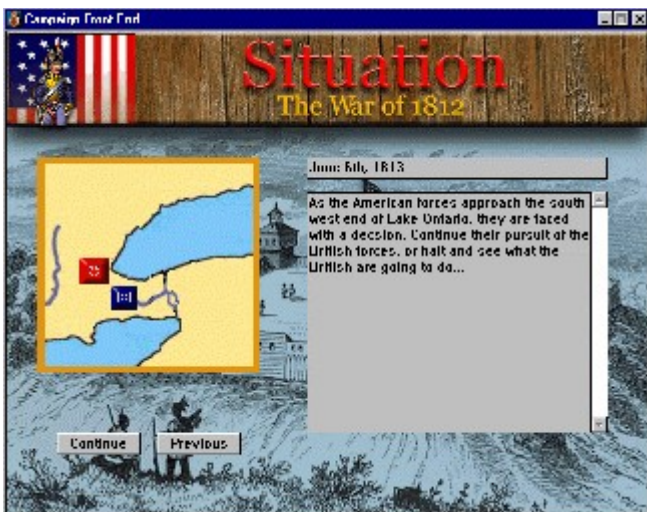


When you start a new

campaign, you will be prompted by the **Situation Dialog** to pick the side you want to play and other settings. There are three possible Modes you can select. If you select **A/I (Conservative)** then you will play against the computer and the computer will be making optimal choices during the campaign. If you select **A/I (Reckless)**, you will also be playing against the computer, but in this case, the computer will be making random choices during the campaign. Often this results in more interesting results, although not necessarily the most competitive play. If you select **Play-By-E-Mail**, then you can play the campaign against a human opponent using e-mail to send the turns back and forth. During the campaign, you normally will be transferred to the Main Program to fight battles. The victory outcome of these battles will determine the next situation you encounter in the campaign. If you select **Use Expected Values**, then instead of fighting each battle using the Main Program, an average victory outcome will be used to immediately branch to the next situation in the campaign. You will use this option, when you want to very quickly jump from situation to situation in the campaign without having to fight each battle in detail. Finally, you can select from a list of situations in the campaign. Normally you will select the first situation, as this is the starting point for the campaign, but you also have the option of selecting an intermediate one if you wish to start the campaign somewhere in the middle.



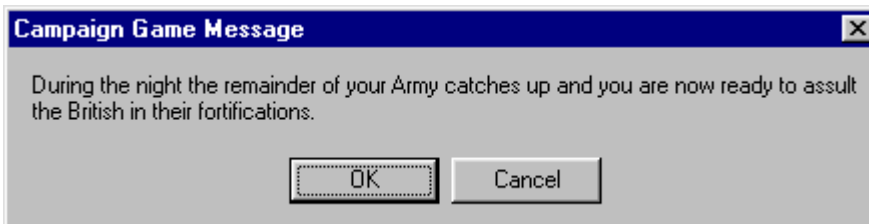
Each campaign begins with an overview. This overview will describe the campaign setting and displays a map of the area over which the campaign will be fought. When a campaign game is played by two human players, both players get to see this screen.



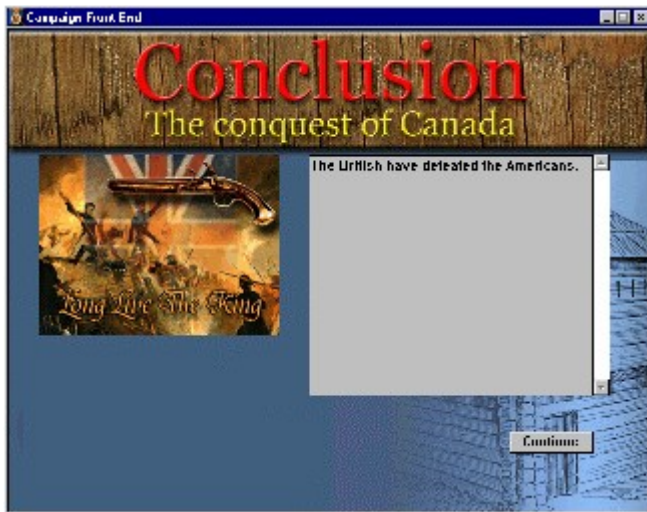
At the beginning of each Situation, a screen is displayed identifying the Situation, showing the various forces involved, and describing the Situation. Both sides of the campaign get to see this screen.



The Decision screen is where you make your choice about how to conduct the campaign. You will be given a list of choices at the top of the screen. As you click on each choice, a description of that choice is displayed and the map is updated to illustrate that choice. You should keep in mind that in general, no situation has a best choice. The best choice will be determined by the corresponding choice made by your opponent, something you won't know until both sides have decided. So you should weigh the possible outcomes you feel are associated with each choice, and decide which one you wish to pursue in that situation. Note that each side in the campaign sees a different screen at this point. Each side only sees the choices for their side and will be unaware of the choice made by the other side.



Once both sides have made their choices, the resulting battle is determined and each side will get a message describing the battle. When Use Expected Values is selected, this message will have a Cancel button in addition to an OK button. If you select the OK button, then the Expected Value of the battle will be used to determine the campaign branching. If you select the Cancel button, then the game will transition to the Main Program so that the current battle can be fought in detail.



In general, each battle outcome will cause the campaign to branch to the next Situation in the campaign. However, depending on the outcome and the Situation, the campaign will eventually branch to a terminating situation. Here, the overall outcome of the campaign is determined and described.

When you play a campaign using Play-By-E-Mail, then you will receive messages at various times indicating that the campaign file is ready to be e-mailed to your opponent. You should mail your opponent the `cpf` file containing the campaign at this point. Note that this single file contains all information associated with your game and that no other files need be included.

### Summary of Campaign Play Modes

There are a wide variety of ways that campaigns can be played. For the briefest possible campaign, play against the computer (AI play mode) and select "Use Expected Values". In this way, a complete campaign can be completed in a manner of minutes. For a longer game and more detail, select "Use Expected Values", but then select a battle to fight in detail by selecting Cancel when the encounter message is displayed. The time required to finish the battle can be varied by choosing Manual or Automatic play mode within the battle itself. In this way, a complete campaign can be completed in an hour or so. Then, for a longer campaign, skip the "Use Expected Values" option and play each battle in detail and in Manual mode. This type of campaign will require a couple of hours to complete. Next, you can play a campaign using Play-By-E-Mail. Note that you can choose the "Use Expected Values" option when playing under PBEM if you just want to see how your campaign choices play out against a real opponent. This approach would require a day or more to complete a campaign. Again, you can choose the "Use Expected Values" option, but then Cancel this option at the time of a battle to play out the battle in detail. In this way, a PBEM campaign would be about the same length of time as a normal PBEM battle if you selected a

single campaign battle to play in detail. Within the battle itself, you can choose the Automated Defensive Fire optional rule to double the speed that you complete the battle. Finally, to get the longest possible campaign, you would skip the "Use Expected Values" option and the Automated Defensive Fire optional rule which would result in a campaign lasting a very long time. In summary, a campaign can be played in a manner of minutes, days, or even years in the extreme cases.

## Network Play

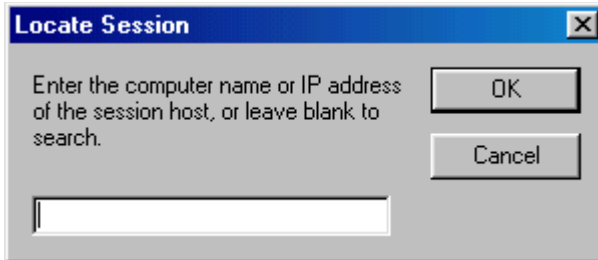
This section describes the details associated with multi-player **Network Play**. Microsoft's Direct Play is used for this purpose. Note: Direct Play supports a number of protocols such as TCP/IP for Internet play and IPX for Local Area Network play. However, there are problems with some IPX drivers so if you have any problems playing a game using the IPX protocol, you should try connecting over your LAN using TCP/IP instead.



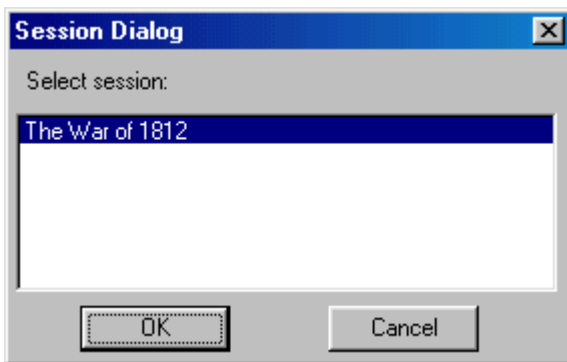
The Player Dialog is displayed so that each player can specify their name and to specify if they want to be on the same side as the Host player or the opposing side.



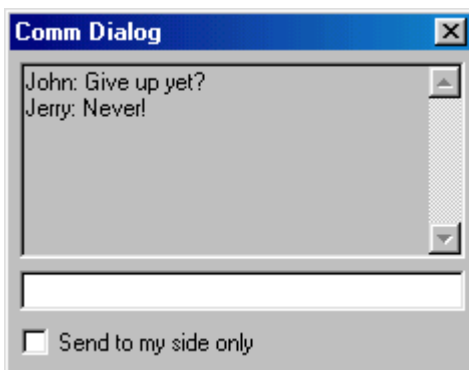
Next, the Connection Dialog is displayed for both the Host and the Caller so that the connection type can be selected. The standard connection types include Internet Play via TCP/IP and Local Area Network (LAN) Play via the IPX protocol. In addition, standard modem dial-up and serial (i.e., null-modem) connections are possible.



Before choosing the TCP/IP connection type, you should make sure you are already connected to the Internet via your ISP (Internet Service Provider). In addition, the Modem Host should run the Windows standard application **WINIPCFG.EXE** found in the Windows directory and note their IP Address. In most situations, this IP Address will change every time you make a connection to the Internet. This IP Address will have to be communicated to the Caller (using e-mail or chat for example). The Caller should enter this IP Address when prompted via the **Locate Session** dialog to establish a connection with the Modem Host.

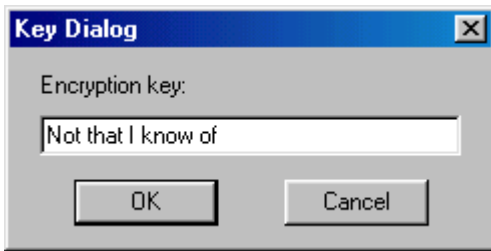


If you are the Caller, then once you make a connection to the Host computer, you will be provide a list of Direct Play sessions to connect to. Select the Campaign 1776 session.



Once a connection has been established, the Comm Dialog will appear and allow both players to communicate with each other. You can type messages in the area at the bottom of the Comm Dialog and press Return to send them. All messages are displayed in the top area of the Comm Dialog prefaced by the name of the player sending the message. In Multi-Player Network Play games, you can limit the sending of the message

to players of your side, by selecting the option at the bottom of the Comm Dialog.



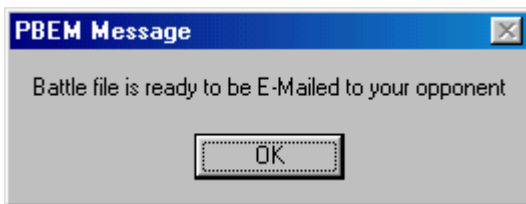
If you are the first Caller of the opposing side, you will be prompted to specify an Encryption Key to be used to encrypt the battle file on the Host computer. This encryption will prevent your opponent from trying to access the battle file in your absence. Be sure to remember your Encryption Key and specify it exactly the next time you open an existing battle or else a read error will occur. If you trust your opponent, it is OK to leave the Encryption Key blank.

## Multi-Player

In general, both sides of a Network game can have more than one person assigned to them. The Host player and the first player to connect playing the opposing side, will be the **Commander** for their respective sides. By default, the Commanders control all units for their side. Additional players on each side can be assigned commands by the Commander. Each player can only move and fire units under their command. The Multi-Player Dialog described in the [Main Program Help File](#) describes the actions used to assign commands to players and to manage Multi-Player features.

## Play By E-Mail

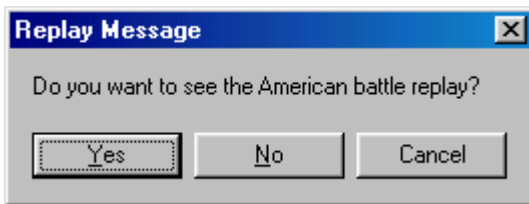
This section describes the details associated with Play-By-E-Mail (PBEM). PBEM is initiated either from the Campaign front-end or through the Play-By-E-Mail option of the Modes Menu (see the [Main Program Help File](#) ).



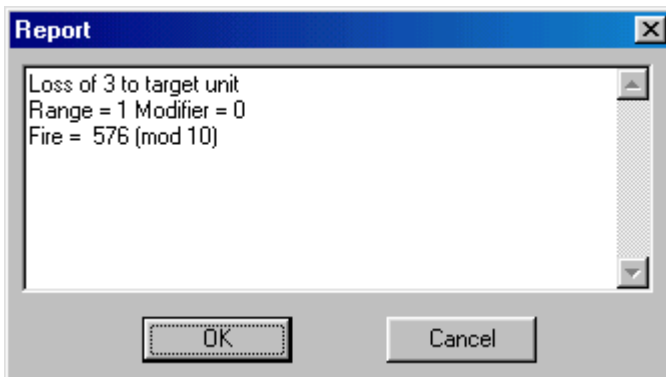
When a game is started under the PBEM option, the player starting the battle will be prompted with the New Scenario Dialog (see the [Main Program Help File](#) ) to select the side they wish to play, the [Fog of War](#) option, any change to the [Advantage](#) value, and Optional Rules. When control of the game passes to the opposing player, the main program will save the PBEM game in a file with extension `bte` and notify the

player that the file can now be E-mailed to their opponent. The player should send the `bte` file either Zipped up or as an attachment in an E-mail.

When the other player receives the E-mail, it is essential that they copy the `bte` file into the appropriate game folder. By default, this game folder is `\Program Files\HPS Simulations\The War of 1812`, but this can be changed during installation. Once the `bte` is copied, the player can start PBEM mode either from the File Selection Dialog (see the [Main Program Help File](#)), or through the PBEM option of the Modes Menu (see the [Main Program Help File](#)).



When the player opens the PBEM file, they will be prompted to view the battle replay. If they notice that the replay is not for the opposing side, they have opened their own PBEM file in error and should immediately select **Cancel**. Otherwise, they can select **Yes** or **No** to either view the replay or advance directly to their turn.



During the battle replay, combat results are reported in a dialog. Select **OK** to close the dialog and continue normally. If you select **Cancel**, the replay will continue but no subsequent combat results will be reported. Pressing the Escape (**Esc**) key will terminate the replay.



When a PBEM battle is saved with the PBEM Encryption Option enabled (see the Settings Menu in the [Main Program](#)



**Help File** ) or if the file has already been encrypted by the opposing player, then the player will be prompted for an Encryption Key. On subsequent turns, the identical key must be entered by the player in order to read the file. Note that a PBEM battle can be encrypted even after play has begun, but once encrypted, it cannot be converted back into an un-encrypted form.

## Design Notes



This section provides explanation for certain game features.

**Why can't you use the Undo Movement function of the Command Menu when Fog of War is in effect?** If this were allowed, you would be able to send out units on multiple scouting missions with the option of returning them to their starting location and thereby determining unfair information on the location of enemy units. You might say that the Undo should only be disabled if the units being moved run into unknown enemy units, but even knowing that there are no enemy units in a certain direction is unfair information if the moving player is allowed to undo the move.

**Why can't an Infantry unit change to Line formation after it has moved under the Manual Defensive Fire Optional Rule?** Line and Column formations are a trade-off relative to each other. While movement is more efficient in Column formation, units can only fire when in Line formation. If units were allowed to move in Column formation during a Movement Phase and then change into Line formation at the end of the phase, it would allow

units to unfairly use Column formation for movement without suffering any of the adverse affects from using this formation.

**Why does it take so long for units to recover from Fatigue?** In the game, Fatigue is used to represent combat fatigue, not the physical state of being *winded*. As such, the physical effects of combat fatigue are felt long term and do not wear off through simple rest. In many battles of this era, the end of the battle was determined by fatigue and not by losses. In larger battles, commanders had to be careful to rotate their fighting units and not commit any one force too long to battle. Having higher Fatigue recovery rates would permit the unrealistic ability for commanders to rest units for short periods of time and then recommit them to battle, something that was not common historically.



**What is the justification for the Quality Fire Modifiers Optional Rule? Are you saying that A and B units are sharpshooters?** No, this is not the intent of the rule. The rule is meant to reflect the more efficient and higher rate of fire that higher quality units were capable of, and the corresponding lower rate of fire that lower quality units generally had. Units with experience were able to keep their guns unjammed during a hot battle, even to the point of having slightly smaller caliber bullets on hand to use after their guns had become clogged from burnt gunpowder. Lower quality units could not sustain high rates of fire due to their inexperience and poor training. They also had poor habits such as sometimes inadvertently firing their ramrods at the enemy and thus reducing their ability to fire. For the same reason, higher quality units were more proficient with the use of the bayonet and thus the justification for the Quality Melee Modifiers Optional Rule.

**Why aren't the Optional Rules called Advanced Rules?** The primary reason for having Optional Rules is two fold. First, Optional Rules are intended to provide some variety to game play. As such, they are intended to put a new twist on familiar situations and keep the game interesting. Second, Optional Rules are intended to provide an outlet for disagreements over how certain issues are to be approached. That is, rather than debate an issue to death, an Optional Rule is often provided so that differing viewpoints are supported in the game, even if they are not agreed to by 100% of the user population. Given this intention, Optional Rules should never be confused with Advanced Rules which are intended to provide more realism or detail but at a sacrifice of playability or simplicity. An Optional Rule could conceivably reduce realism or detail as long as it provided some interesting variety into the game or provided a useful simplification that improved playability under certain circumstances.



**Why isn't the Victory Points for Leader Casualties Optional Rule a default rule? Wouldn't killing an important leader be a significant event for the player?** Every rule must be evaluated for what it motivates players to do. In this case, awarding points for leader casualties motivates the player to hide his leaders away from the battle to avoid losing Victory Points. For example, the player would never risk an important leader in the front line for fear of losing Victory Points and would keep him carefully hidden away in some safe place. Conversely, players would be motivated to focus their fire primarily on hexes containing leaders in hopes of picking up Victory Points. Having this rule as a default rule would skew the battles away from the historical outcomes in a way that would detract from the games as learning tools. Given the tactical nature of the battles, losing an important leader is felt even in the absence of this rule since his replacement, and all replacements in the line of command, will generally be of lesser quality than the original leader and thus this will have a detrimental effect on command.

**I just had my entire army rout away! The default routing logic is bogus!**

The routing logic causes the rout of a single unit to sometimes spread to adjacent units and so forth in a way that can have a major effect on a force. Establishing the correct balance in this logic is a matter of interpretation. If you have a large rout occur, check the following factors that affect morale. Did your units have **High Fatigue**? Were they Low or Out of Ammo? Were they of mediocre quality? Was it a Night turn? Experience has shown that game players conduct their attacks with far greater aggressiveness than was ever shown on the actual battlefield. Historically, leaders were very cautious in the commitment of their troops and were careful not to keep units in battle for too long for fear they would not hold. If you have just had D quality units, low on ammo, with Fatigue level 90, rout during a Night turn, don't think that this was an unrealistic event.

**Why have the Isolation Optional Rule which causes Isolated units to defend in melee at ¼ strength?** This rule is intended to have two effects. Commanders in the War of 1812 were always very cautious of their flanks. They often withdrew from a position before they had been overwhelmed simply because their flanks were threatened. This rule is intended to motivate the player to think in these terms. Secondly, the War of 1812 was fought in many cases as a gentleman's war. Being surrounded was considered to have been bested and most often resulted in the surrender of the surrounded troops rather than any fight to the death. The ¼ modifier to defending strength is intended to reflect the tendency of the **Isolated** units to surrender when pressed.

**Why isn't the Partial Retreats Optional Rule a default rule?** Retreats from a hex by units that have just lost a melee are necessarily very chaotic events. Certainly with a breakdown in command and morale, it would not be possible to find some optimal displacement of units that would just fit in the retreating hex. A good analogy would be a burning building where quite often a large number of people perish even though there are exits readily available. The dynamics of this situation is known as choking and results in greatly reduced flow through openings. Based on this, there is justification for concluding that obstructions to their retreat would often result in the surrender of the defeated troops rather than some optimal reduction.

**I had a unit lose ammunition on the first turn of the game. That's ridiculous!** Is it? Having a full complement of ammunition was never guaranteed in any battle. While most often, a unit had enough ammunition to ensure the ability to fight for some time, breakdowns in command and organization often resulted in ammunition problems. Adding an ammunition level to each unit in the game would simply increase the micromanagement necessary to play the game without adding any benefit and would in fact

detract from the game by including information that could hardly be known by higher level commanders.

**I don't understand the Low Ammo rules. Why can units with Low Ammo fire Defensive Fire and not Offensive Fire? Do they have bullets or don't they?** The distinction here is based on the fact that units low on ammunition will start to save their shots and not use them unless absolutely necessary. Since Defensive Fire is the point at which defending units get to fire on their attacker, this would be a good example of when units would use their precious ammunition. Not allowing Offensive Fire is the point at which the lack of ammunition is applied and thereby motivates the player to not use these units for attack. The end result in the game is a good one causing a reduction in aggressive ability by units low on ammo but retaining the ability for units low on ammo to deliver a good blast when threatened.



**I think artillery batteries that change facing should be allowed to fire in the same turn. All they are doing is turning the guns to a new direction which hardly takes a full 5 minutes.** In general there is more to a change of facing by an artillery battery than turning the guns. In fact, the 60 degree field of fire given to units and artillery in particular represents such simple redirection of the guns to a new direction. Beyond this arc, changes cannot be achieved simply through turning of the guns. Simply turning the guns and delivering a volley outside of this arc would end up shooting into the backs of your fellow battery mates. Therefore, changes of facing by batteries would involve moving the guns and caissons to new positions which, although perhaps not requiring a full 5 minute turn, would be more involved than it might appear. The affect of this restriction on the game is also a good one since it makes artillery vulnerable to flanking maneuvers, something that was true if general.

**Why can't Disrupted units conduct a melee attack?** The state of Disruption in the War of 1812 game represents a state of disorder caused by combat. The effectiveness of a Disrupted unit is considered diminished and this affects movement, firing, and in this case melee. For melees, Disruption is meant to include effects such as being pinned under fire and a general state of confusion resulting from combat. Historically these conditions most often resulted in the withdrawal of the attacking units or the taking of cover by the attacking units. In either case, a charge into the enemy position was not possible. Multiple accounts exist describing how charges were made again and again against enemy positions only for the attacking units to fall back to their original positions without success. Despite the boldness of their leaders, it just was not possible to bring the fight to the enemy when the attacking troops were sufficiently affected by defensive fire. In the game, the effect of this rule will be two fold. First, attacking units, despite their success, will often become Disrupted and therefore the effectiveness of their subsequent fighting will be diminished. Second, it motivates the keeping of a reserve so that units in good order are available at key points in the battle. Both of these effects are good for the game.

**Can you explain why units that have not fired Offensive Fire receive a 10% melee bonus in subsequent Melees?** Given the slow reload rate of the War of 1812 weapons, leaders often found that when units were allowed to fire during an advance, they were reluctant to continue advancing with their weapons unloaded. This often resulted in the order to units that they not fire during a charge but rather advance without stopping. The additional vigor with which the advancing units conduct their attack is the basis for the modifier.

**I melee attacked an unsupported Artillery battery and was defeated. This can't be right.** Melees have two possible outcomes. In the first, the attacker wins the melee and displaces the defending units from the hex. The second outcome results in the defenders retaining the defending hex. A failure of the attacking units to take the defending hex should not be interpreted so much as a victory for the defending units, but rather simply a failure of the attacking units to conduct a successful melee. In the case of a melee attack against Artillery, a failure to take the defending hex means that the attackers had so much trouble conducting the charge or were so ineffective in their charge, that the defending hex could not be considered taken. If you wish, you can consider the melee in this case to be ongoing, although this is not part of the game engine. The bottom line is that no melee can be guaranteed to be an automatic victory unless the defending hex is free of fighting units.



### How come PBEM

**Encryption is just an option? Doesn't everyone want to prevent PBEM cheating?** There's one very important thing that you should realize about PBEM cheating: it cannot be prevented. While encryption of the PBEM file and the use of PBEM passwords does deter the casual cheater, it does not and cannot prevent all cheating. Why? The problem with attempting to encrypt the PBEM file is that the code required to encrypt and decrypt the file plus, most importantly, the encryption key is located in a very handy place to the would-be cheater: the main program. A hacker of modest abilities would be able to determine everything they needed to know by inspecting the main program object code and very quickly come up with a program to encrypt and decrypt PBEM files. Would the person you're playing go to that much trouble? Does the person you're playing know someone who would? And finally, don't think that there is any way to prevent someone from replaying the PBEM battle until they know far more than they should about your position and have found the optimal fire and combat outcome as well. Write something to the registry? Hide a secret file on their hard drive? Come on, those are so obvious that even someone with only a small amount of motivation would be able to circumvent them. So think about cheating as a layered problem:

- Is the person you're playing with familiar to you and someone you trust? Don't bother with encryption, it just gets in the way.
- Are you wanting to use passwords just so you don't inadvertently open the file during your opponent's turn? Sure, use encryption for this.
- Are you playing a good natured competition with someone who is probably not sufficiently motivated to hack the encrypted file? Encryption will work here too.
- Are you playing someone you don't trust and need some way to stop them from any form of PBEM cheating? Don't bother. You'll drive yourself nuts trying to figure out if they've somehow hacked the encryption to get a win.

**Why the change to double Fatigue firing effects on Artillery?** Based on experience, players found that it was just too unrealistic for Artillery to remain under enemy fire turn after turn accumulating Fatigue and perhaps the occasional loss, but not really suffering enough to motivate the player to withdraw the battery. Surely as a result of this fire, the battery, while perhaps not losing cannons, is suffering damage to its crew and equipment that has a detrimental effect on its ability to fire. This attrition to the ability of the battery to fire is the basis for the increased Fatigue firing effects.

**Why are melee casualties for mounted cavalry vs. mounted cavalry reduced from normal?** Based on several historical accounts, it appears that while mounted cavalry clashes were very colorful events with much bravado and swinging of sabers, that compared with the number engaged, casualties resulting from these encounters were generally very light. Playtesting has shown that in the absence of such a modification, cavalry casualties become unhistorically high.

## Tactics



This section contains information that the player may find helpful in playing the game. Since the War of 1812 was fought using linear tactics, there are similarities between this period and others such as the Napoleonic period and the American Civil War. But there are some important differences you should keep in mind.

- "Don't fire until you see the whites of their eyes!" There is a bonus given to the first time a unit fires in the battle. This reflects the fact that weapons of the period tended to foul after being fired several times and that the first few firings of the weapon were therefore more effective. You should wait



until your enemy is within short range to take the most advantage of this effect.

- Keep in mind that your cavalry can fight dismounted. The cavalry in the game represents dragoon units. These carried guns and could dismount and fight on foot. Since there is not a lot of cavalry in any battle, you cannot use your cavalry the same way you would in a Napoleonic battle. In general, cavalry charges will only be effective against routed or other vulnerable units. Otherwise, you should use your cavalry for scouting and as advance units.
- Use the Extended formation to improve the defensive abilities of your units. Extended formation represents the open order formation used by skirmishers as opposed to the shoulder-to-shoulder formation used by units in line. Light units and militia can use this formation to improve their ability to withstand the fire and charges of units in line while retaining their own fire power.
- Artillery will not have a significant effect on the battle. In each battle you will not have a great amount of artillery to use. In addition, it will generally consist of the smaller guns such as 3 and 6 pounders. It will not be possible to base a strong defensive position on cannon as you would in Napoleonic or Civil War battles.
- Remember that the standard unit in the game is the company. In games where the regiment is the standard unit, the column formation actually represents the relative location of individual companies, each of which has deployed in line. Therefore, remember that your companies will always fight in line formation and that their relative position to each other will determine the formation of their regiment. Likewise, there is no square formation in the game since this is again determined by the relative position of the companies.
- As the American player, you should be very aware of the differences in quality between your regular forces and your militia. Depending on the battle, you will have a varying amount of militia in your army. You should be careful how you utilize the militia as they will not stand up to fighting with the British regulars.
- American militia is very significant when the "Rifle Fire Effects" Optional Rule is used. The use of this rule will result in very high leader casualties among the British player. This effect is the result of two key facts. First, the rifle was much more accurate than the smoothbore musket. This allowed the use of aimed fire, that is, fire directed at a specific target. Second, the Americans were not reluctant to target individual leaders in battle, something that the British considered ungentlemanly conduct.

## **Leader Names and Faces**



There is far less documentation on the War of 1812 than more modern conflicts such as the American Civil War or World War II. Very little specific Order of Battle information is available in the general literature. In many cases, the leaders of individual organizations, particularly regiments, is not readily available. In addition, very few images of the leaders exist. In contrast to the American Civil War, where the wide spread use of early camera technology was in effect, individuals in the War of 1812 had to rely on paintings for their portraits, a costly and time-consuming process. Thus, there are significant gaps in the knowledge about leaders, their names, and their faces. To provide a continuous database for the game, it was necessary to introduce place-holder names and faces for some of the leaders. To help identify these for the player, the following conventions have been used:

- When a leader's name is not known, a place-holder name has been introduced that is followed by a period. For example, the leader name Col. Hamilton. would be an example of a place-holder name since it is followed by a period.
- Likewise, when a leader's portrait is not available, a place-holder image has been used. This place-holder image is marked with a red dot to distinguish it from an actual portrait.

## Troubleshooting



Here are some answers to some common problems.

**I'm trying to install the game, but when I put the game CD in my drive, nothing happens. What do I do now?**

There are two possible problems. One is that the software thinks the game is already installed on your system. If this is possible, perform the uninstall operations you find below. The other possibility is that there is a problem with the autorun configuration on your system. To check this, double-click on My Computer and double-click on your CD drive. If this starts the installation process, then fine. Otherwise, you should see the files on the game CD. Find and double-click on the Install program. And if this doesn't work, then double click on the game folder, The War of 1812 for example, and double-click on Setup.

**At the end of the installation, I got an error message that a directory could not be deleted. Is this OK?**

Yes, this is fine. There is a bug in the installation software that causes this problem if you deselect the final installation options. But otherwise, the game should work fine.

**I think I may have accidentally deleted a file, or I may have a corrupted file. How do I fix that?**

If you think you have one or two files that need fixing and you know the names of the files, then you should be able to find the files on the CD and copy them to the game folder. Remember however, that any file copied from the CD will become read-only and you probably want to select the file and change its properties to remove this attribute. If this sounds too hard, or if you want to make sure that your installation is correct, then you should reinstall the game.

**I want to make sure that all my files are correct. How do I reinstall the game?**

In order to reinstall the game, you must first uninstall the game. Just to be on the safe side, you should copy any battle files you have to another folder before you do this. If you have concerns about bad files in your installation, you may also want to delete the game folder after finishing the uninstall. Once the uninstall has been done, then you just reinsert the game CD, and it should perform a autorun installation. If this should fail to happen, then find the install program on the game CD and double click on this.

**You say that I have to uninstall the game before I reinstall it. How then do I uninstall the game?**

From the Start button, go to Settings, then Control Panel, and double-click on Add/Remove Programs. In the list that is displayed, find the name of the game and double-click on that entry. This should initiate the uninstall process.

**When I uninstall the game, I get a message that the game folder is locked. Is this a problem?**

No, it is only telling you that there are files in the folder, probably battle files, that are left over after the install and that it cannot delete the folder as a result. After the installation is done, you can look at the files in the game folder and decide if you want to save any of them or just delete the game folder.

**Instead of doing the correct uninstall process, I tried just deleting the game folder. Now when I try to uninstall the game, it says that there is a missing file. Now what do I do?**

Ok, at this point you have to edit your registry. *Be very careful.* The registry is the single most important file on your computer and if it gets corrupted, then you may have to reinstall Windows. But if you need to, here are the steps you take:

1. From the Start button, select Run, and then enter: \windows\regedit
2. When the Registry Editor runs, look on the left-hand side and double-click on HKEY\_CURRENT\_USER, then double-click on Software, then double-click on HPS Simulations.
3. At this point, you should see one or more entries with the name of the game. For example, for The War of 1812, you should see an entry named The War of 1812 and another named EWB. For each of these entries, click on the entry, then right click, and select Delete.
4. Exit the Registry Editor.

Once you have performed these steps, then when you insert the game CD, the autorun installation should run and you will be able to reinstall the game.

**I want to see the files on the CD, but when I double click on the CD icon, it doesn't do anything.**

By default, when you double-click on the CD icon, it invokes the autorun feature. So, what you need to do to see the files on the CD is right-click on the CD icon, and select Open.

**I don't think DirectX is properly installed on my computer. How can I fix that?**

A copy of DirectX is on your game CD. Double-click on My Computer, then *Right-click* on the CD Drive and select Open, then double-click on the game folder, then double-click on the DirectX folder. Finally, double-click on DXSetup. When this runs, click on the ReInstall DirectX button.

**I just added another drive to my system, and now the game doesn't play the intro video or the background sounds. How do I fix that?**

The installation process records the location of your CD drive so the software can find files associated with the game that are not copied to your hard drive. When you add a drive to your system, it probably changed the drive letter of your CD drive. If you are adventurous, you can try editing your registry to fix the problem, but the safe way is to uninstall the game and reinstall it (see above).

**I want to move the game from one location on my hard drive to another. Is that possible?**

As above, there are registry entries associated with the installation that will be affected by this if you move the game folder to another location. The sure way of doing this is to uninstall the game and reinstall it (see above).

**I found an install program on the CD, but when I double-click in it, nothing happens.**

By double-clicking on the install program, you are invoking the autorun procedure. After the game has been installed, this has no effect. If you want to reinstall the game, then you have to uninstall it and reinstall it (see above).

**When I play the game, my CD-ROM drive constantly runs. Is there a way to stop this?**

The CD-ROM is running since the background music is being read from the CD. There are two solutions to this:

1. Disable Background Music in the Settings Menu.
2. Reinstall the game using a Custom Installation and select Background Music for installation on your hard drive.

**The words in the Hex Info area overlap each other. How can I fix that?**

Unfortunately, many video device drivers support a feature called Large Fonts. When you set this, it causes text on the screen to come out larger

than it would by default. In Windows, there is no reliable way for an application to determine that you have made this setting and so there is no way for the game to correct the text size. You need to configure your Display settings to use the default Small Fonts setting.

## Credits



**Publisher:** Scott Hamilton

**Design and Development:** John Tiller

**Scenario Design:** Richard Hamilton

**Additional Research and Historical Overview:** Pat Blackman

**Artist:** Joseph, The Genius, Amoral

**Uniform Research:** Mark Adams

**Campaign Maps:** Michael Avanzini

**Background Music:** [Thomas Hook](#)

**Playtesters:** Al Amos, Garry Cope, Dave Frey, Greg Hanbuch, Curt Good, Terry Lubka, Dave Moser, Ernie Sands

**Special Thanks To:** Al Amos, A.R. Charles, Thomas Ciampa, Tim DeLano, Curt Good, Terry Lubka, Christian Orlander

**Contact Information:** <http://www.hpssims.com> or 408-554-8381

## Colonial Campaigns Club

Richard Hamilton



So you have the game, you have run it through it's paces and think you have it mastered. Ok, ready to move on to the next game, right? Not so fast. You have only begun to uncover the potential for enjoyment this game offers. The real fun and challenge begin when you take on another human in one of the various forms of play available. There's Play by e-mail (PBEM), Live Internet Play, or Two-Player Hot seat.

If interested in playing the glorious battles of the American Revolutionary War as a freedom fighting colonial or a steadfast British redcoat, or the battles of The War of 1812 please visit the PBEM Colonial Campaign Club. We have 100+ members, message boards, Army Headquarter website's, rankings, etc.

Which motto will be yours? "Give me liberty or give me death!" or "God save the King!"?

<http://www.wargame.ch/1776/index.html>

Current Games Supported:

**Campaign 1776**  
**The War of 1812**



Highlight

To display a unit on the map with a yellow outline.

## Hot Spot

The hex on the map currently selected with the red hex outline.

## Exit Objective

An objective hex where points are awarded to the owning side for removing units from the map at that hex.

## Fog of War

An option that causes certain information to be hidden from the opposing player such as the location of units that are not spotted and the arrival of enemy reinforcements.

## Fixed

Units that are Fixed cannot move until Released, fired upon, or meleed against, but may fire themselves and may change formation.

## Parameter Data

Basic data from a pdt file that applies to the current scenario.

## Hot Key

A keyboard character that when typed performs the same function as a menu selection or toolbar button.

## A/I

Artificial Intelligence. In this case, this represents the automatic movement, firing, and combat by units under the control of the computer program.



## Advantage

A change in the outcome of internal tables used by the main program so as to give one side in a battle a generally more favorable result over the other side. Typically used to balance battles against the computer.

## Isolated

Units are Isolated if it is not possible to find a path from the unit to an edge of the map that is free of enemy units or their Zone-Of-Control.

## Low Fatigue

A Fatigue level from 0 through 29.

## Medium Fatigue

A Fatigue level from 30 through 59.

## High Fatigue

A Fatigue level of 60 or higher.

## Detached

A unit is Detached when it is beyond the Command Radius of its commander. A Regiment Leader is Detached when he is beyond the Command Radius of his commander.

## Enfilade

Fire on a unit that comes from a direction the unit is not facing.

## Zone-Of-Control

The 2 facing hexes of a unit in Line Formation capable of firing.

## Local Control

A two-player game is under Local Control when the current phase is under your control, and under Remote Control when it is under the control of your opponent.

## Weapon Type

The type of weapon carried by a particular unit. See the Parameter Data for a description of the various types and their range effectiveness.

Index

<b>C</b>	
Colonial Campaigns Club.....	47
Combat Results.....	22, 23
Command.....	15, 16
Credits.....	46
<b>D</b>	
Defensive Fire.....	9, 11
Design Notes.....	33
<b>F</b>	
Fatigue.....	19, 20
<b>I</b>	
Introduction.....	3
<b>L</b>	
Leader Names and Faces.....	41
<b>M</b>	
Meleeing.....	12
Morale.....	17, 18
Movement.....	6, 7, 8
<b>N</b>	
Network Play.....	29, 30
<b>O</b>	
Offensive Fire.....	12
<b>P</b>	
Play By E-Mail.....	31
<b>Q</b>	
Quick Overview.....	4
<b>S</b>	
Supply.....	20, 21
<b>T</b>	
Tactics.....	40
The Campaign Game.....	23
Troubleshooting.....	42